



Benchmark Retirement Fund

MONTHLY REVIEW OF PORTFOLIO PERFORMANCE TO 31 OCTOBER 2012

By T H Friedrich – Managing Director, Retirement Fund Solutions Namibia (Pty) Ltd

The monthly review of portfolio performance, as set out in this issue, is also available on our website at www.rfsol.com.na.

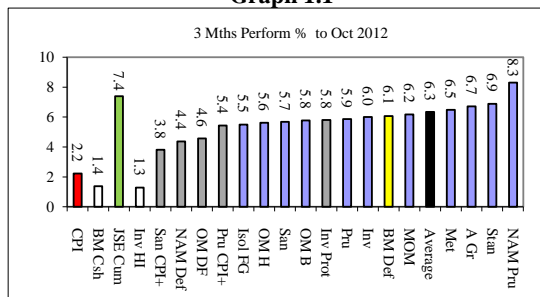
1. Review of Portfolio Performance

In October our average prudential balanced portfolio returned 2.79% (September 1.13%). Top performer is Namibia Asset Management/Coronation (3.49%), Investec (2.38%) takes bottom spot.

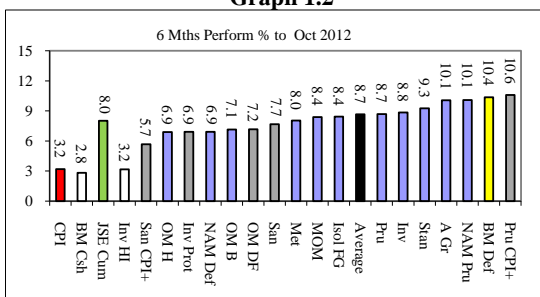
Graphs 1.1 to 1.7 reflect the performance for periods from 3 months to 10 years of a number of the most prominent prudential balanced portfolios (blue bars), 'special mandate portfolios' with lower volatility risk (grey bars), fixed interest portfolios (no color bars), the average of prudential balanced portfolios (black bar), the JSE Allshare Index (green bar), and the CPI (red bar). Benchmark investors should take note of the performance of the default portfolio (yellow bar), which now represents a combination of Prudential Namibia Inflation Plus and Allan Gray. Below is the legend to the abbreviations reflected on the graphs:

Benchmarks	
Namibian Consumer Price Index	CPI Cum (red)
JSE Allshare Index	JSE Cum (green)
Benchmark Default Portfolio	BM Def (yellow)
Average Portfolio (prudential, balanced)	Aver (black)
Special Mandate Portfolios	
Money market	BM Csh (no color)
Investec High Income (interest bearing assets)	Inv HI (no color)
Investec Protector	Inv Prot (grey)
Investec Opportunity Fund	Inv Opp (grey)
Prudential Inflation Plus	Pru CPI+ (grey)
Old Mutual Dynamic Floor	OM DF (grey)
Sanlam Inflation Plus	San CPI+ (grey)
NAM Coronation Balanced Def	NAM Def (grey)
Market related portfolios	
Allan Gray Balanced	A Gr (blue)
Investec Managed	Inv (blue)
Investment Solutions Bal Growth, (multimanager)	Isol FG (blue)
Prudential Managed	Prud (blue)
Metropolitan Managed	Met (blue)
NAM Prudential Balanced	NAM (blue)
Old Mutual Profile Balanced	OM B (blue)
Old Mutual Profile Growth	OM H (blue)
RMB Managed	RMB (blue)
Sanlam Managed	San (blue)
Stanlib Managed	Stan (blue)

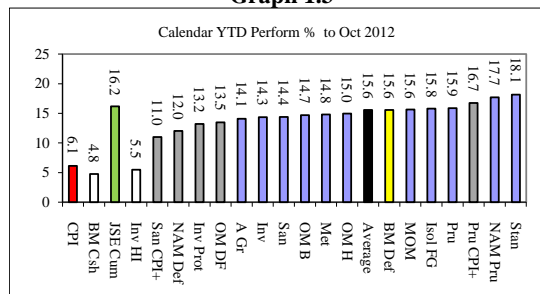
Graph 1.1



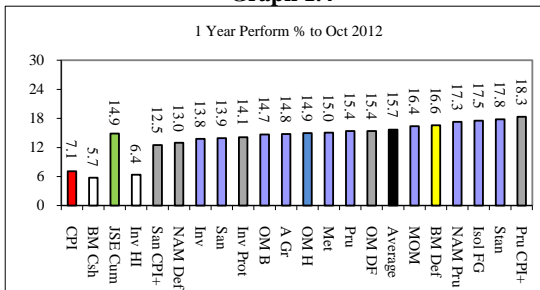
Graph 1.2



Graph 1.3



Graph 1.4





The monthly review of portfolio performance, as set out in this issue, is also available on our website at www.rfsol.com.na.

Strategy	3 Year Perform % to Oct 2012
Stan	15.9
NAM Pru	13.6
Pru CPl+	13.5
BM Def	13.5
MCom	13.2
Met	12.9
San	12.9
Average	12.8
OM H	12.8
Isol FG	12.7
A Gr	12.2
NAM Def	12.1
OM B	12.0
San CPl+	12.0
Inv	11.7
Pru	10.9
OM DF	10.2
Inv Prot	10.0
Inv HI	7.5
JSE Cum	12.1
BM Csh	6.4
CPl	5.5

5 Year Perform % to Oct 2012

Category	Performance %
A Gr	10.5
Sum	9.8
Pru Cpl+	10.0
Sum Cpl+	9.4
BM Def	8.8
Inv HI	8.6
NAM Def	8.6
NAM Pru	8.5
OMI DF	8.3
Average	7.5
MOM	7.1
Iso FG	7.1
OMI H	7.1
Met	6.8
Pru	6.8
Inv	6.8
OMI B	6.3
Sum	4.6
JSE Cum	3.5
BM Csh	8.1
CPI	7.1

Category	Performance (%)
CPI	5.8
BM Csh	8.5
JSE Cum	14.8
BM Def	11.8
Met	14.7
San	15.0
Isol FG	15.6
OM B	15.7
Inv	16.0
MOM	16.0
Average	16.0
Pru	16.1
Stan	16.1
OM H	16.9
A Gr	18.3

12 Mth Performance Oct 12 - Asset Classes

Asset Class	Performance (%)
Property UT	20.1%
All Share	18.6%
ALL Bond	12.5%
US\$/R	10.0%
Cash	5.7%

Oct-12

3 Months Performance Oct 12 - Market Cap & Style

Category	Performance (%)
Top 40	10.2%
Growth	10.1%
Value	6.1%
Small Cap	4.2%
Mid Cap	2.0%

Oct-12

12 Mth Performance Oct 12 - Market Cap & Style

Category	Performance (%)
Small Cap	25.2%
Mid Cap	24.7%
Growth	21.5%
Top 40	17.4%
Value	14.1%

3 Months Performance Oct 12- Asset Classes

Asset Class	Performance (%)
All Share	8.8%
US\$/R	4.9%
Cash	1.3%
ALL Bond	0.2%
Property UT	-1.4%

3 Months Economic Sect Performance Oct 12

Economic Sector	Performance (%)
Consumer Services	13.0%
Technology	11.6%
Basic Materials	11.3%
Consumer Goods	10.0%
Telecommunication	7.8%
Health Care	7.4%
Financials	4.2%
Industrials	3.1%

12 Months Economic Sect Performance Oct 12

Sector	Performance (%)
Health Care	49.8%
Consumer Services	44.1%
Financials	31.1%
Industrials	30.1%
Consumer Goods	25.9%
Telecommunication	18.0%
Technology	11.6%
Basic Materials	-1.4%





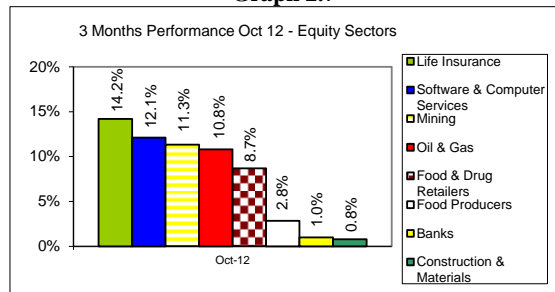
Benchmark Retirement Fund

MONTHLY REVIEW OF PORTFOLIO PERFORMANCE TO 31 OCTOBER 2012

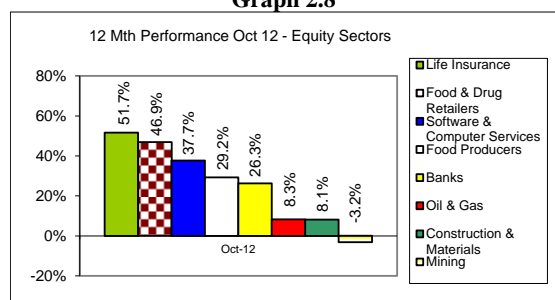
By T H Friedrich – Managing Director, Retirement Fund Solutions Namibia (Pty) Ltd

The monthly review of portfolio performance, as set out in this issue, is also available on our website at www.rfsol.com.na.

Graph 2.7



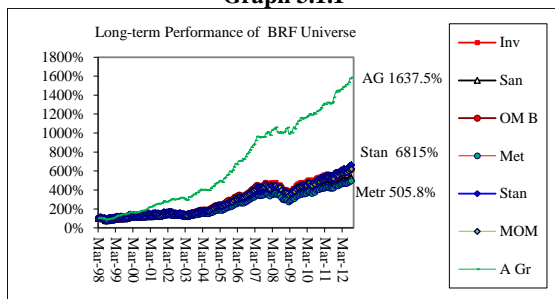
Graph 2.8



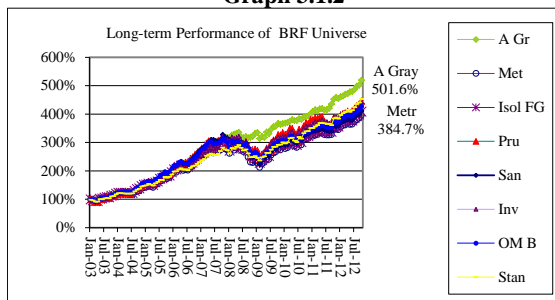
3. Portfolio Performance Analysis

3.1. Cumulative performance of prudential balanced portfolios

Graph 3.1.1

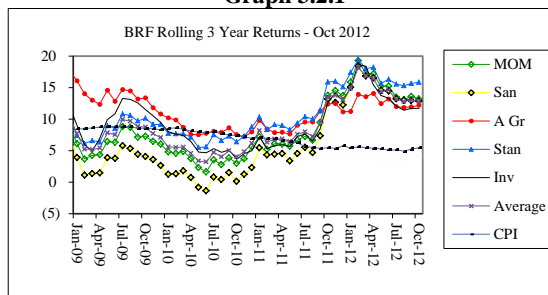


Graph 3.1.2

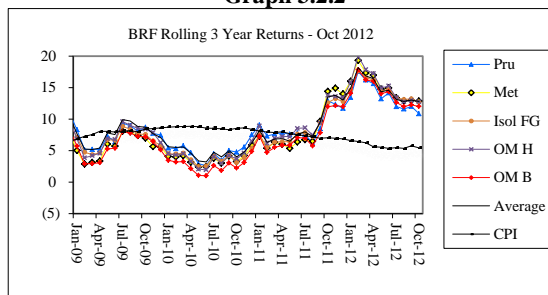


3.2. 3-year rolling performance of prudential balanced portfolios relative to CPI

Graph 3.2.1

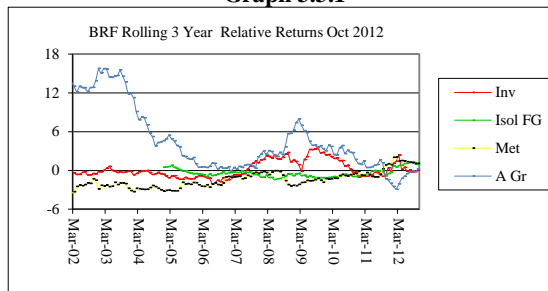


Graph 3.2.2

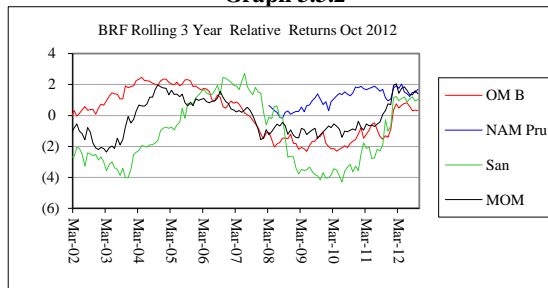


3.3. 3-year rolling performance of prudential balanced portfolios relative to average prudential balanced portfolio on zero

Graph 3.3.1



Graph 3.3.2





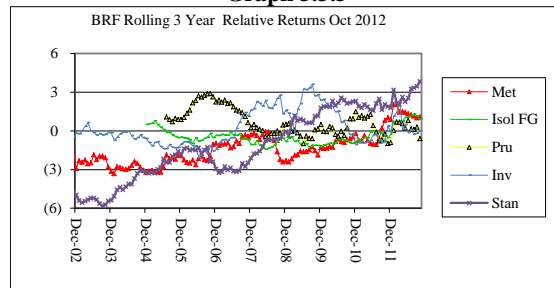
Benchmark Retirement Fund

MONTHLY REVIEW OF PORTFOLIO PERFORMANCE TO 31 OCTOBER 2012

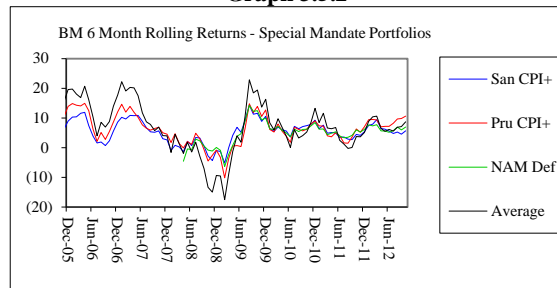
By T H Friedrich – Managing Director, Retirement Fund Solutions Namibia (Pty) Ltd

The monthly review of portfolio performance, as set out in this issue, is also available on our website at www.rfsol.com.na.

Graph 3.3.3

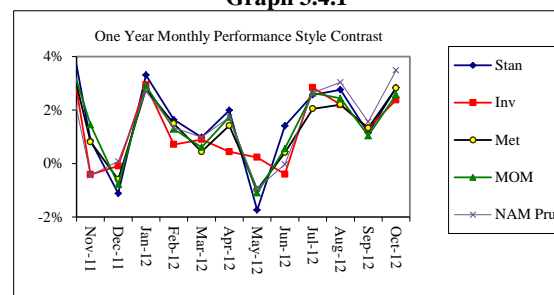


Graph 3.5.2



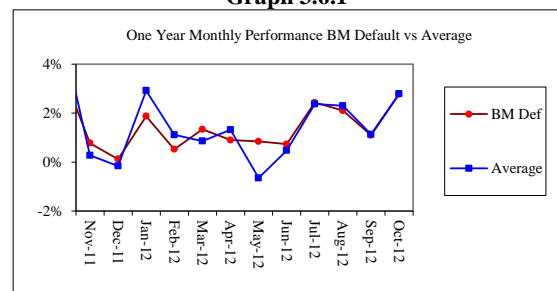
3.4. Monthly performance of prudential balanced portfolios

Graph 3.4.1

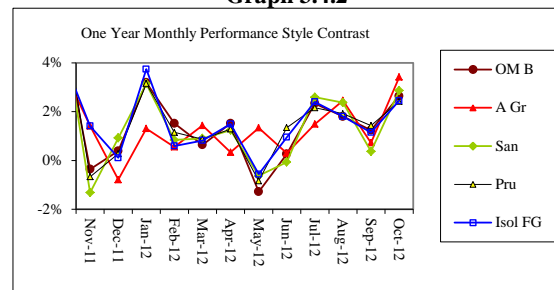


3.6 Monthly and cumulative performance of 'Default' portfolio relative to average prudential balanced portfolio

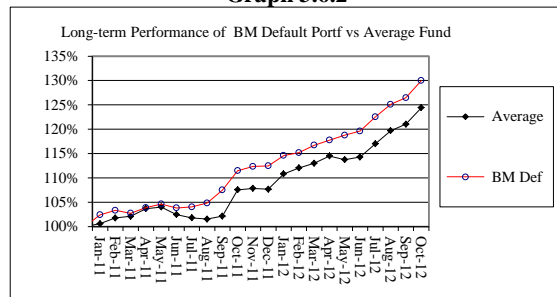
Graph 3.6.1



Graph 3.4.2

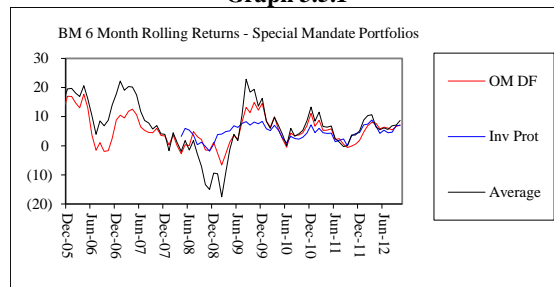


Graph 3.6.2



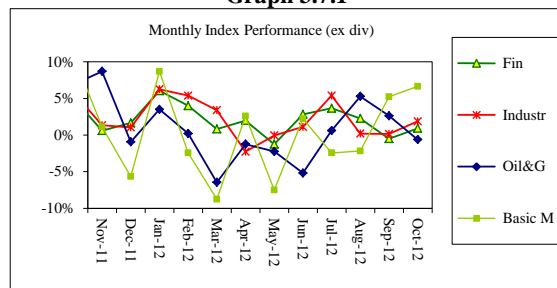
3.5. 6-month rolling returns of 'special mandate' portfolios

Graph 3.5.1



3.7 Monthly and one year cumulative performance of key indices (excluding dividends)

Graph 3.7.1





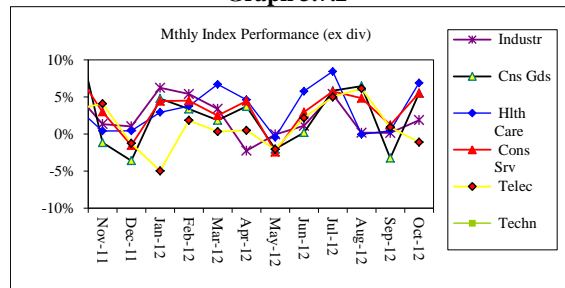
Benchmark Retirement Fund

MONTHLY REVIEW OF PORTFOLIO PERFORMANCE TO 31 OCTOBER 2012

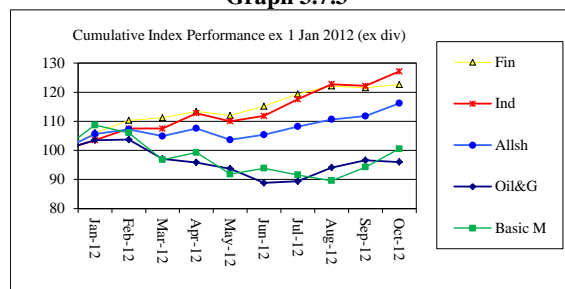
By T H Friedrich – Managing Director, Retirement Fund Solutions Namibia (Pty) Ltd

The monthly review of portfolio performance, as set out in this issue, is also available on our website at www.rfsol.com.na.

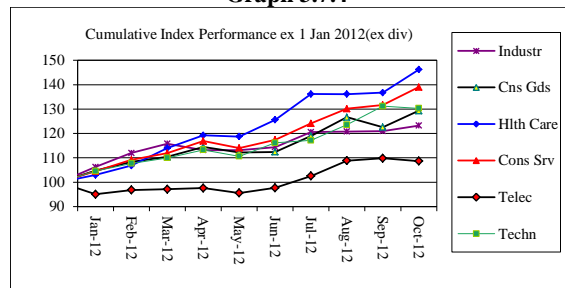
Graph 3.7.2



Graph 3.7.3



Graph 3.7.4



4. The Benchmark Default Portfolio

Graph 1.6 shows that the average prudential balanced portfolio returned 7.5 % p.a. in nominal terms, or 0.4 % p.a. in real terms, over the past 5 years while the Benchmark Default portfolio returned 8.8% p.a. in nominal terms, or 1.7% p.a. in real terms. This outperformance of the average manager by the Benchmark Default portfolio is quite remarkable considering its substantially lower equity exposure (44.9% vs 59.5% as at the end of September).

Considering that the average prudential balanced portfolio should deliver a real return before management fees (typically 0.75%), of roughly 6% per year, these portfolios are currently trailing the expected long-term goal significantly over the past 5 years.

Having raised the risk profile of the Default portfolio effective the start of 2011, by replacing Metropolitan ARF with Allan Gray, we would expect the Default portfolio to sacrifice around 1% for the benefit of lower volatility, thus an expected real return before management fees (typically 0.75%), of around 5% per year. Since this change was effected, the default portfolio

returned a cumulative 30% compared to 24.4% for the average prudential balanced portfolio over this 22 month period.

Relative to the default portfolio, the performance of the prudential balanced portfolios should be more volatile due to a significantly higher equity exposure and its performance should be much closer correlated to that of the overall equity market. The default portfolio should produce a significantly more volatile performance than the money market portfolio. The table below presents one year performance statistics over the 3 years November 2009 to October 2012:

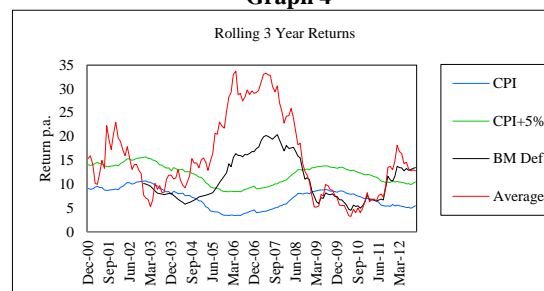
Table 4.1

Measure	Money Market	Default Portf	Average Prud Bal
Worst annual performance	5.8%	8.3%	7.7%
Best annual performance	9.5%	19.3 %	30.2%
No of negative 1 year periods	n/a	0	0
Average of negative 1 year periods	n/a	n/a	n/a
Average of positive 1 year periods	6.8%	12.8%	14.6 %

The Benchmark Default portfolio is a more conservative investment aimed at reducing negative returns and with a long-term return objective of inflation plus 5% before fees and roughly 4.3% after fees.

At this rate of return, the net contribution towards retirement by both, member and employer should be roughly 13% of remuneration, in order to achieve a reasonable income replacement ratio of 2% per year of service. It is very important that employers invested in the default portfolio are comfortable with these investment characteristics and that they should be able to create comfort amongst their employees as well.

Graph 4



Graph 4 measures the success of the Benchmark Default portfolio in achieving its long-term gross investment return objective of inflation plus 5%, on a rolling 3 year basis. It also shows rolling 3 year returns of the average prudential balanced portfolio and rolling 3 year CPI. It shows that since September 2008, both the Benchmark Default portfolio as well as the average prudential balanced portfolio were lagging inflation plus 5% and have surpassed inflation plus 5% since October 2011,





Benchmark Retirement Fund

MONTHLY REVIEW OF PORTFOLIO PERFORMANCE TO 31 OCTOBER 2012

By T H Friedrich – Managing Director, Retirement Fund Solutions Namibia (Pty) Ltd

The monthly review of portfolio performance, as set out in this issue, is also available on our website at www.rfsol.com.na.

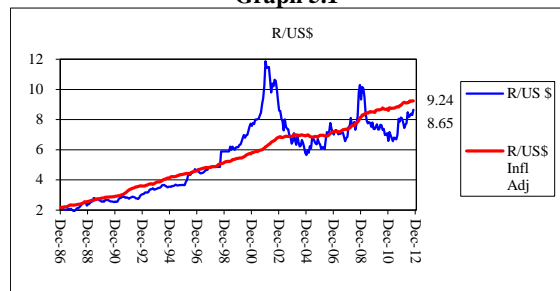
Benchmark default portfolio currently on 13.5%, the average on 12.8%.

5. Review of Foreign Portfolio Flows and the Rand

How is the Rand doing?

Graph 5.1 indicates that the Rand by our measure is fairly valued at 9.24 to the US Dollar while it actually stood at 8.65 at the end of October. Our measure is based on adjusting the two currencies by the respective domestic inflation rates.

Graph 5.1

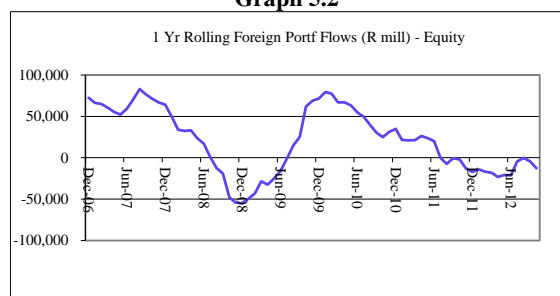


Support of the Rand from foreign capital flows continues, mainly through bond purchases

Graph 5.2 reflects a more steady but still slightly negative flow of capital out of South African equities on a rolling one year basis, with a net outflow of R 12.1 bn on a year-on-year basis at the end of October (outflow of R 4.3 bn to end September). Since the beginning of 2006, foreign net investment in equities amounts to N\$ 159 billion (end September R 167 billion). This represents roughly 2.1% of the market capitalization of the JSE.

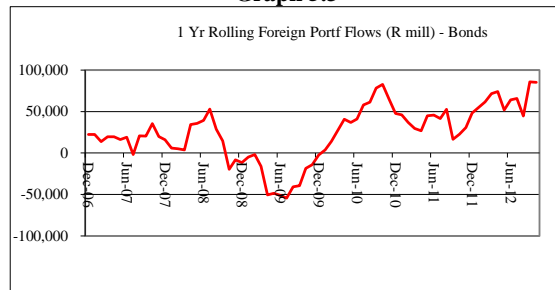
The fiscal easing measures of the Eurozone and again by the US are likely to provide an artificial underpin to the Rand through continued foreign inflows into local financial markets, more specifically into the bond market though.

Graph 5.2



Graph 5.3 on a rolling one year basis, reflects a much more volatile foreign portfolio flow into bonds of R 83.2 bn over the past 12 months to end of October (R 85.8 billion over the 12 months to end of September). Since the beginning of 2006, foreign net investment in bonds amounts to R 203 bn (September N\$ 194 bn).

Graph 5.3

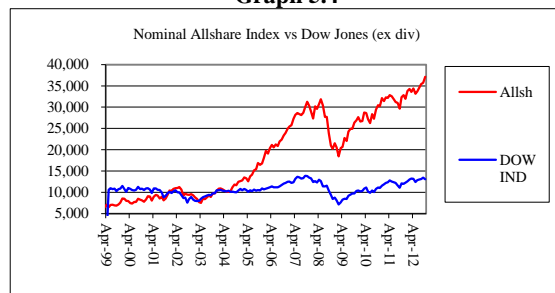


The net inflow of foreign capital into equity and fixed interest assets was R 73 bn for the 12 months to end October (inflow of R 82 bn to end September), compared to R 21 bn for the 12 months to end October 2011 (R 16 bn to end September 2011). Total net foreign portfolio flows amount to N\$ 362 billion since the beginning of 2006 (September R 360 bn).

Graph 5.4 reflects the movement of the JSE and the DOW Jones since May 1999. In nominal terms the JSE passed its month end peak of before the financial crisis, while the DOW Jones is still substantially below its previous peak of 13,896. In nominal terms, the JSE grew by 13.9% per year, while the DOW Jones only grew by 1.6% per year, over this period of just over 13 years, dividends excluded. Namibian inflation over this period was 7% per year in contrast with US inflation of 2.5%.

Graph 5.5 reflects the same statistics but adjusted for US and SA inflation respectively. Since May 1999 the JSE Allshare Index has grown by 6.9% per year above inflation, over this period of just over 13 years, and this excludes dividends of somewhere in the region of 2% to 4%. In contrast, the DOW Jones declined by 0.9% per year above inflation over this period, also excluding dividends.

Graph 5.4





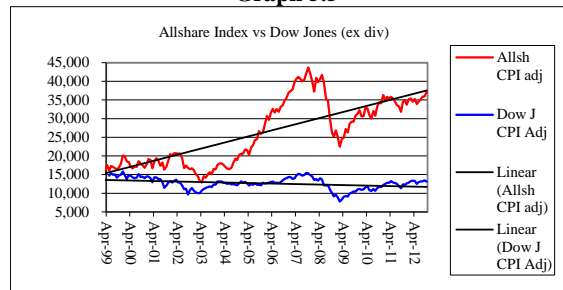
Benchmark Retirement Fund

MONTHLY REVIEW OF PORTFOLIO PERFORMANCE TO 31 OCTOBER 2012

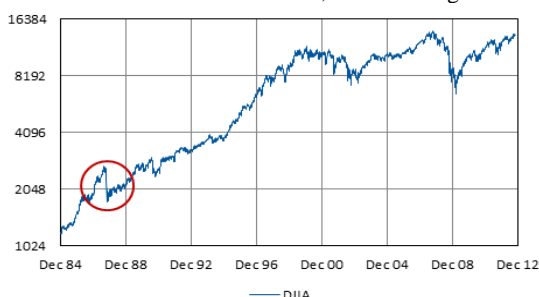
By T H Friedrich – Managing Director, Retirement Fund Solutions Namibia (Pty) Ltd

The monthly review of portfolio performance, as set out in this issue, is also available on our website at www.rfsol.com.na.

Graph 5.5

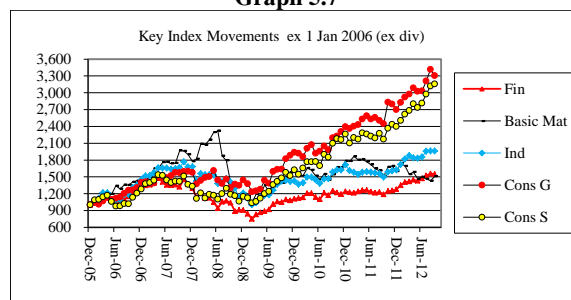


The Dow Jones Industrial Index, over the longer term:



Graph 5.7 provides an interesting overview of relative movement of the key equity sectors on the FTSE/JSE since December 2005 when these indices were first introduced. From this the investor should be able to deduce which sectors offer greater value and which one's offer less value on the basis of fundamentals.

Graph 5.7



6. Conclusion

A concerted effort by global monetary authorities to stimulate their economies through printing of money, also referred to as stimulus measures or packages, failed to achieve the desired result so far. What it has achieved is to protect stock exchanges from implosion as the result of excessively negative investor sentiment. These short-term paper gains may have prevented a further decline in consumer sentiment, however, at the same time the extremely low interest rates over the past 3 years have caused massive deficits in social security systems and pension arrangements overseas, that are modelled on an environment of real interest rates. 3 years' of assumed real returns have so far not materialised and someone will have to bear the brunt of this. As we have seen, many western countries have started to cut on their

pension promises and future generations have already been called upon to contribute through so-called 'austerity measures', and will no doubt have to make further contributions towards these deficits.

These stimulus measures have also resulted in an avalanche of hot money into developing economies in search of yields. This has depressed interest rates in these economies and inflated their currencies. Strong currencies in turn have impacted negatively on the competitiveness of developing economies and retarded their economic development. The strong demand in commodities pre financial crisis that has substantially lifted their market prices, were effectively squandered by commodity based economies such as ours, as the result of their appreciating currencies. So these economies never really benefited from that erstwhile boom while prevailing global monetary policy again catches them on the wrong side of the fence.

For investors the question one needs to find an answer for is how all this will pan out. Stimulus measures will remain in place until such time as developed economies start picking up steam again and this will not be soon. Until then consumer sentiment in the developed world will remain low. Demand for our resources in the developing world, including our natural heritage, will thus remain depressed for some time to come. The economic growth government had bargained on, and which is necessary to contain our debt and sustain its servicing, will not be as rosy as hoped for. Austerity measures will not be avoidable even for us in Namibia and is likely to become a necessity as from 2013 onwards, to last for a while.

When developing economies eventually start picking up steam again in the next two years their tax payers will have to be called to account in an effort to deleverage national balance sheets. This will likely be a long and steep road before the consumer in the developed world will start experiencing an improvement in his personal financial position. At that time stimulus measures will be phased out. The flow of money into developing economies will reverse and their currencies will depreciate. This will improve their global competitiveness and will lead to their economies starting to grow again.

Until then we will experience an environment of low interest rates. Whether we can still expect further reductions, will depend on inflation. We do not believe inflation will decline much from current levels for another year, but rather to move in the opposite direction. This means that interest rates will not be reduced further over the next 12 months but that there is a fair chance of an increase. While global economies are in the doldrums, we will experience a slow reversal of foreign capital flows and a continued depreciation of the Rand. For the next year, returns on local bonds are consequently expected to be subdued to negative should interest rates increase, while equities should experience a 'double





Benchmark Retirement Fund

MONTHLY REVIEW OF PORTFOLIO PERFORMANCE TO 31 OCTOBER 2012

By T H Friedrich – Managing Director, Retirement Fund Solutions Namibia (Pty) Ltd

The monthly review of portfolio performance, as set out in this issue, is also available on our website at www.rfsol.com.na.

whammy', firstly from investors in search of yields, but also because low interest rates with inflation at current levels, impact positively on the bottom line of companies.

Offshore equity markets that were particularly hard hit by negative sentiment rather than economic fundamentals, still offer compelling investment opportunities despite the fact that they have already started to recover. Very interesting statistics published by 1741 Asset Management (previously Wegelin Asset Management), the MSCI Europe offered a discount to fair value of 21%, 1% down since September compared to a discount of 8% of the MSCI World, down 1% since September, and a premium of 17% of the US MSCI, also down 1% since September. Worst hit bourse of all was Italy with a discount of 59% of the MSCI Italy, down 1% since September.

On the basis of fundamentals and the prevailing economic environment, foreign equities should outperform foreign bonds and property and in addition, a number of foreign bourses offer high discounts on fair value for political reasons that should fade away. In the face of a depreciating Rand, such investments would of course experience that benefit as well. Locally we would expect equity to remain the top performing asset class, followed by property, bonds and cash over the next one to two years. Bonds and cash face the real prospect of negative returns should interest rates be raised over the next 1 to 2 years.

In terms of local equity sectors, we remain concerned about the significant growth SA Consumer Goods and Consumer Services have seen, returning 20.1% and 19.3 % per year, respectively, since December 2005, excluding dividends. Similar returns were generated by the Health Care and Technology sectors. We do not believe this is sustainable. Financials and Industrials have returned much more modest growth rates of 6.8% and 10.7%. Over the same period, the Namibian CPI grew by 6.9% per annum. Basic Materials that have grown by a meagre 7.2% per year since the beginning of 2006, should also offer some buying opportunities although as a sector we do not foresee it showing any significant recovery in the medium term.

We believe an assertive balanced portfolio with an overweight in equities, neutral property and underweight bonds and cash should be appropriate under current circumstances. A high foreign equity exposure to particularly Eurozone countries where markets experienced a dramatic decline as the result of negative investor sentiment, is our call for the next year.

7. Important notice and disclaimer

Whilst we have taken all reasonable measures to ensure that the results reflected herein are correct, Benchmark Retirement Fund and Retirement Fund Solutions Namibia (Pty) Ltd do not accept any liability for the accuracy of the information and no decision should be taken on the basis of the information contained herein

before having confirmed the detail with the relevant portfolio manager. The views expressed herein are those of the author and not necessarily those of Benchmark Retirement Fund or Retirement Fund Solutions.

